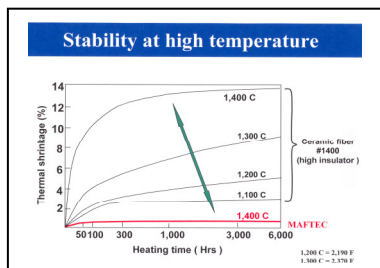


MAFTEC® - Mitsubishi Alumina Fiber Technology. MAFTEC® was developed in the 1980's by Mitsubishi Plastics Inc., for long term, high or cyclic temperature operation. MAFTEC® "Polycrystalline Alumina Fibers", exhibit excellent thermal stability, resiliency, erosion resistance and mechanical strength at temperatures to 1600°C - 2912°F.



MAFTEC® blankets are available in a range of densities and sizes. They are manufactured in computer controlled, state of the art facilities to produce quality and consistency.

KEY FEATURES

1. Uniform Thickness & Density
2. Low Shot
3. Minimal Shrinkage at 1600°C - 2912°F.

MAFTEC® PRODUCT FORMS

1. Blanket
2. Bulk
3. Board
4. OBM (Paper Replacement)

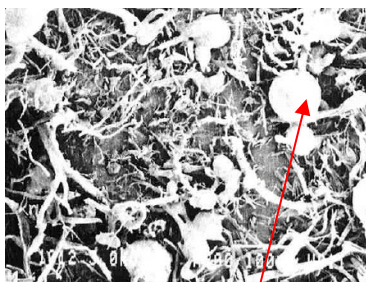
MAFTEC® blankets are easily converted into veneering, weld-on and modules/anchor retaining systems. MAFTEC® blankets can be used as batten strip to reduce shrinkage at the joints of ceramic fiber modules reducing heat loss, module damage and maintenance shutdowns.

SHOT!!!

WHO NEEDS IT?

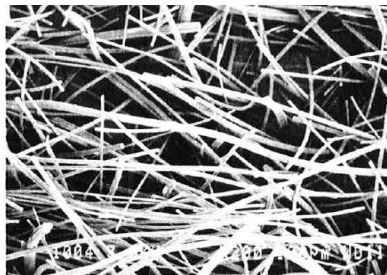
NOT YOU!!!

CERAMIC FIBER



LOTS OF SHOT

MAFTEC



ABSOLUTE MINIMAL SHOT IN MAFTEC

Shot is defined as the unfiberized particles resulting from the conversion from molten to solid state in the production process of ceramic fiber. It is a hard, grainy like, abrasive material. Shot is a very high percentage by weight.

MAFTEC® is a drawing, spinning and drying process eliminating the highest percentage of shot due to its unique manufacturing process.

CONTINUOUS GALVANIZING LINES

MAFTEC® lined CGL Furnaces showed 3 major improvements over refractory and/or refractory fiber lined furnaces.

1. Production Yield Improvement of 1 - 3%.
2. Higher line speed
3. Better coordination with other mill processes.

REFERENCE

Annual Continuous Galvanizing Line output 450,000/ton

Typical Yield 96.5%

MAFTEC® Lining Yield Improvement - 1-3%

ECONOMIC RESULT

Yield Improvement 96.5 - 97.5

45,000 tons @ \$2,100/Ton

= \$945,000

MAFTEC® blankets or modules can be applied as a veneer over existing lining materials or as a complete lining system. MAFTEC® modules can be fabricated from MAFTEC® blankets exclusively, or as part of our composite system to realize the most cost effective lining.

ALL YOU DO IS WIN!!!

INDUSTRIES SERVED

- | | | | |
|----------------------------|--------------------|------------------------|---------------------------|
| ☞ Refining - Petrochemical | ☞ Non-Ferrous | ☞ Zinc | ☞ Precast Manufacturing |
| ☞ Rock Products | ☞ Die-Casting | ☞ Boiler Manufacturing | ☞ Mineral Processing |
| ☞ Chemical | ☞ Power Generation | ☞ Primary Aluminum | ☞ O.E.M. Furnace Builders |
| ☞ Steel | ☞ Incineration | ☞ Secondary Aluminum | ☞ Cremation |